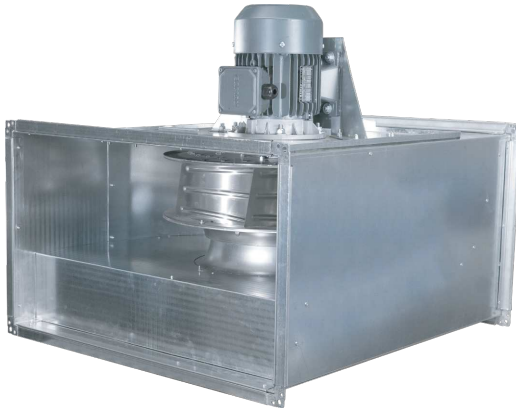
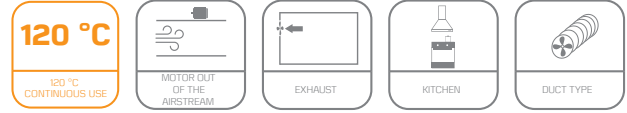


K-DREC Centrifugal In-line Rectangular Duct Fan With Motor Out Of Air



K-DREC fans can be mounted directly on to rectangular ducts with ease. Inspection hatch allows cleaning fan and maintenance. Motor is located of the airstream and is not effected by matters in the air.



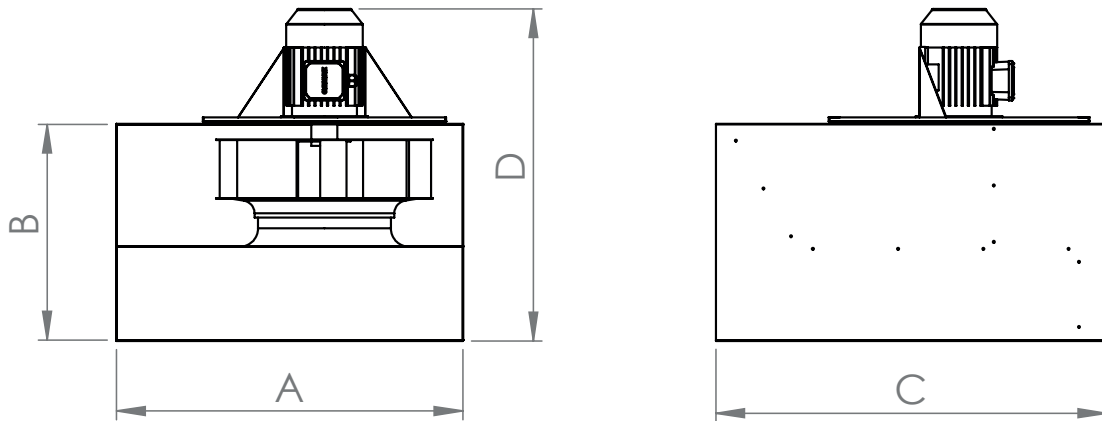
MOTOR INSULATION CLASS	F CLASS
MOTOR PROTECTION CLASS	IP 55
MOTOR EFFICIENCY CLASS	IE2-IE3
MOTOR ENCLOSURE TYPE	TEFC
MOTOR BRAND	GAMAK-VOLT-WATT
BODY MATERIAL	GALVANIZED SHEET METAL
BODY COATING	OPTIONAL
IMPELLER MATERIAL	GALVANIZED SHEET METAL
DUTY CYCLE	IEC Duty Cycle-S1
WORKING AMBIENT TEMPERATURE	-20 - +50 °C
DIRECTIVE	IEC-60335-2-80, ISO 1940-1

MODEL	VOLTAGE (V)	FREQUENCY (Hz)	POWER (kW)	REVOLUTION (rpm)	FLOW RATE (m³/h)	NOISE LEVEL (dB(A))	PRICE
K-DREC 280	380	50	0,18	1.450	1.100	70	
K-DREC 315	380	50	0,25	1.469	1.600	73	
K-DREC 355	380	50	0,37	1.471	2.300	75	
K-DREC 400	380	50	0,55	1.478	3.300	78	
K-DREC 450	380	50	0,75	1.454	5.000	70	
K-DREC 500	380	50	1,10	1.462	7.000	83	
K-DREC 560	380	50	1,50	1.464	9.800	83	

Values are for 0 Pa.

Single-phase motors cost an additional 20%.

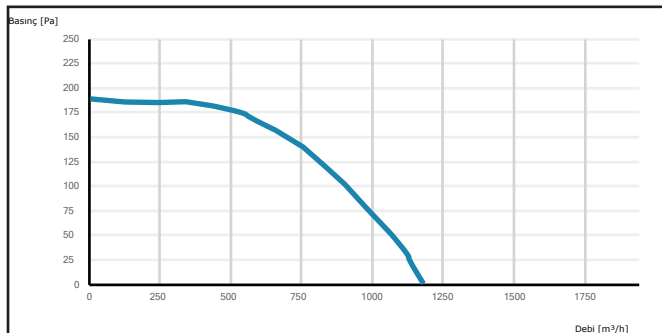
DRAWING



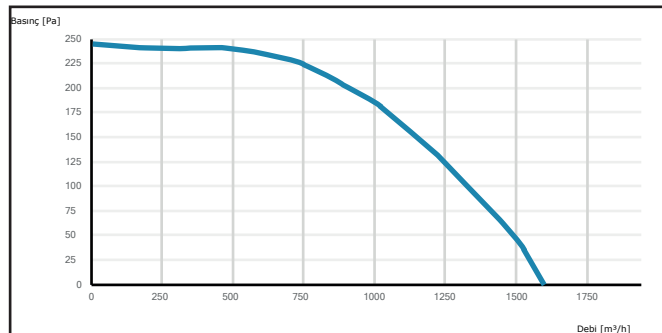
MODEL	A (mm)	B (mm)	C (mm)	D (mm)
K-DREC 280	500	250	565	450
K-DREC 315	500	250	565	476
K-DREC 355	600	300	760	526
K-DREC 400	600	350	750	590
K-DREC 450	700	400	790	641
K-DREC 500	800	500	900	765
K-DREC 560	1000	500	1050	790

PERFORMANCE CURVES

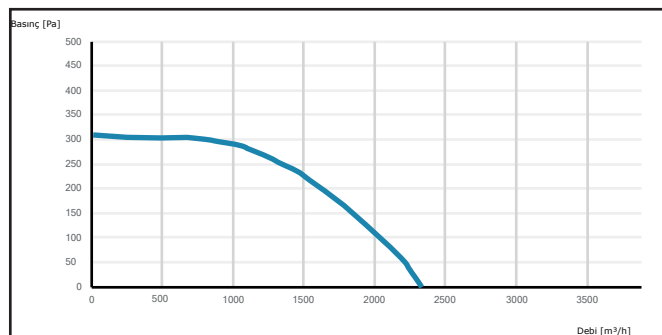
K-DREC 280



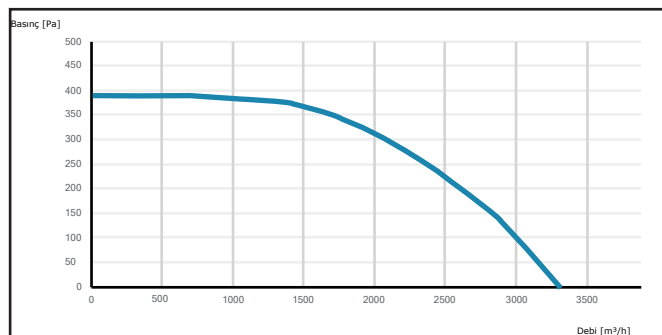
K-DREC 315



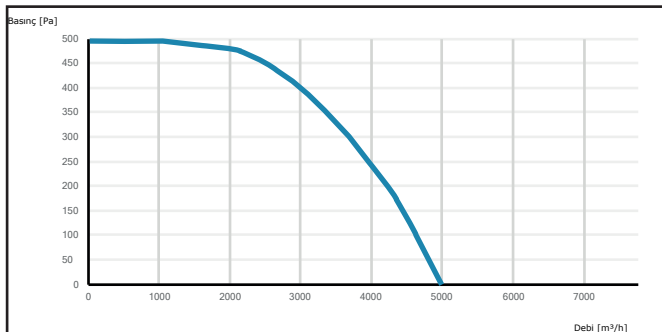
K-DREC 355



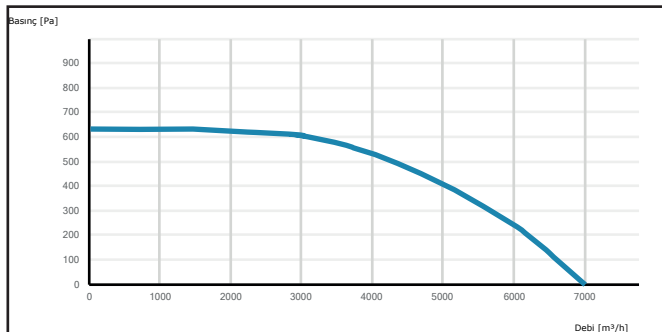
K-DREC 400



K-DREC 450



K-DREC 500



K-DREC 560

